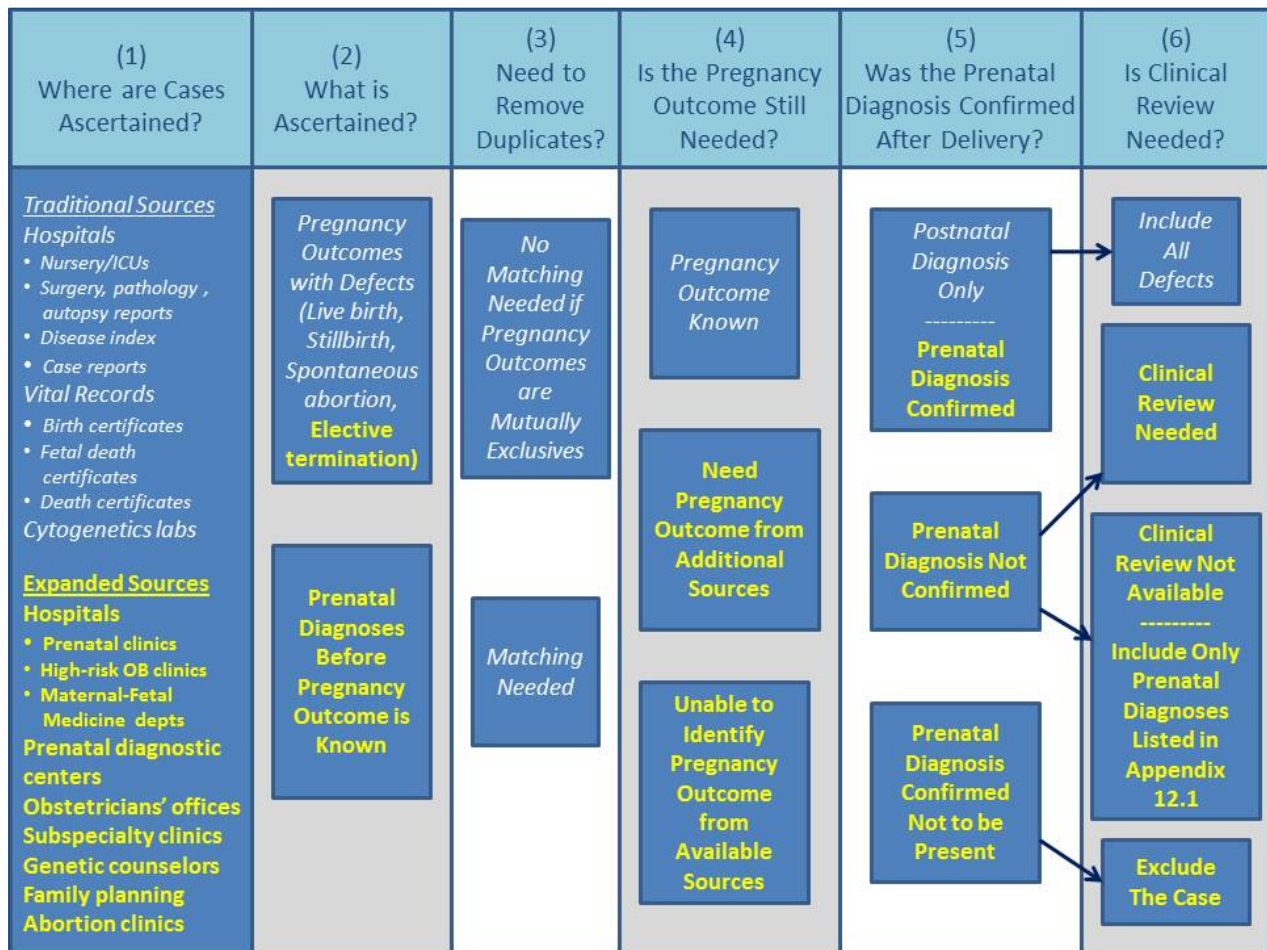


Appendix 12.1

Components for Incorporating Prenatal Diagnoses into Birth Defects Surveillance



This figure is designed to help programs assess how their current methods might support the process of incorporating prenatal diagnoses into birth defects surveillance, and where these methods might be expanded. The components described here indicate steps to consider in the process; they are not meant to be a comprehensive list of components. Those in white italics represent traditional activities utilized in surveillance for defects diagnosed postnatally; those in bold yellow text (not italics) represent expanded activities to use in surveillance for prenatally diagnosed defects. The overall figure is not a flow diagram or decision tree; however, in the last two columns, the arrows represent decisions to be made about which defects to include and whether clinical review is needed.