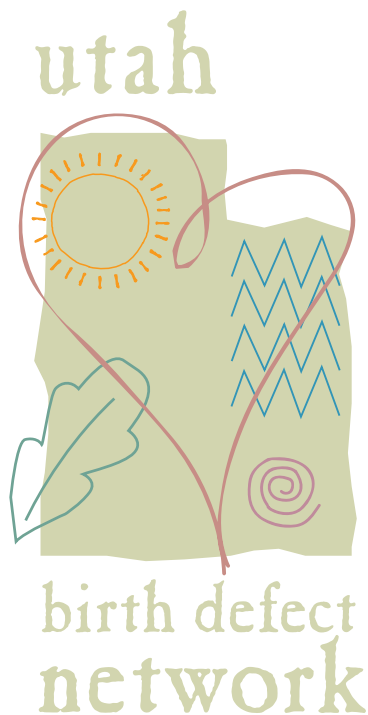


Utah Birth Defect Network



Utah's Environmental Public Health Tracking Experience

February 13, 2008

Miland Palmer, MPH, RHIA







History



- Purpose for partnering with Environmental Public Health Tracking Network (EPTHN)
 - Geocode Utah Birth Defect Network (UBDN) data
 - Spatial analysis
 - Environmental data linking
 - Cluster identification and investigation
 - Data dissemination & risk communication

History



- Discussions began in 2003
- 2004 UBDN became member of Technical Advisory Group
- 2005 Geocoding of UBDN data began

History



- 2006 to Present
 - Data sharing agreement
 - National EPHTN
 - Birth Defects Content Work-Group
 - Utah EPHTP local data and portal
 - Indicator Based Information System (IBIS)
 - Plans for secure portal
 - Role based access
 - Pilot Projects
 - All birth defects
 - Orofacial clefts

Sharing UBDN data



- UBDN requirements
 - Data released to public must follow Dept. of Health aggregation standards
 - Approval required for use of identifiable info
 - Approval of any publication

Sharing UBDN data



- Scientific Advisory Board (EPHTN-Utah)
 - Data owner has ultimate approval power
- Scientific Collaboration Protocol (UBDN)
 - Utah Department of Health IRB
 - UBDN Scientific Advisory Board

Accomplishments



- Increased infrastructure
 - Computer with ArcGIS loaded
 - Training in geocoding
- All UBDN data is geocoded
 - From 1994 to 2007
 - Tools and skills to continue geocoding
- Cluster investigation capability

Accomplishments

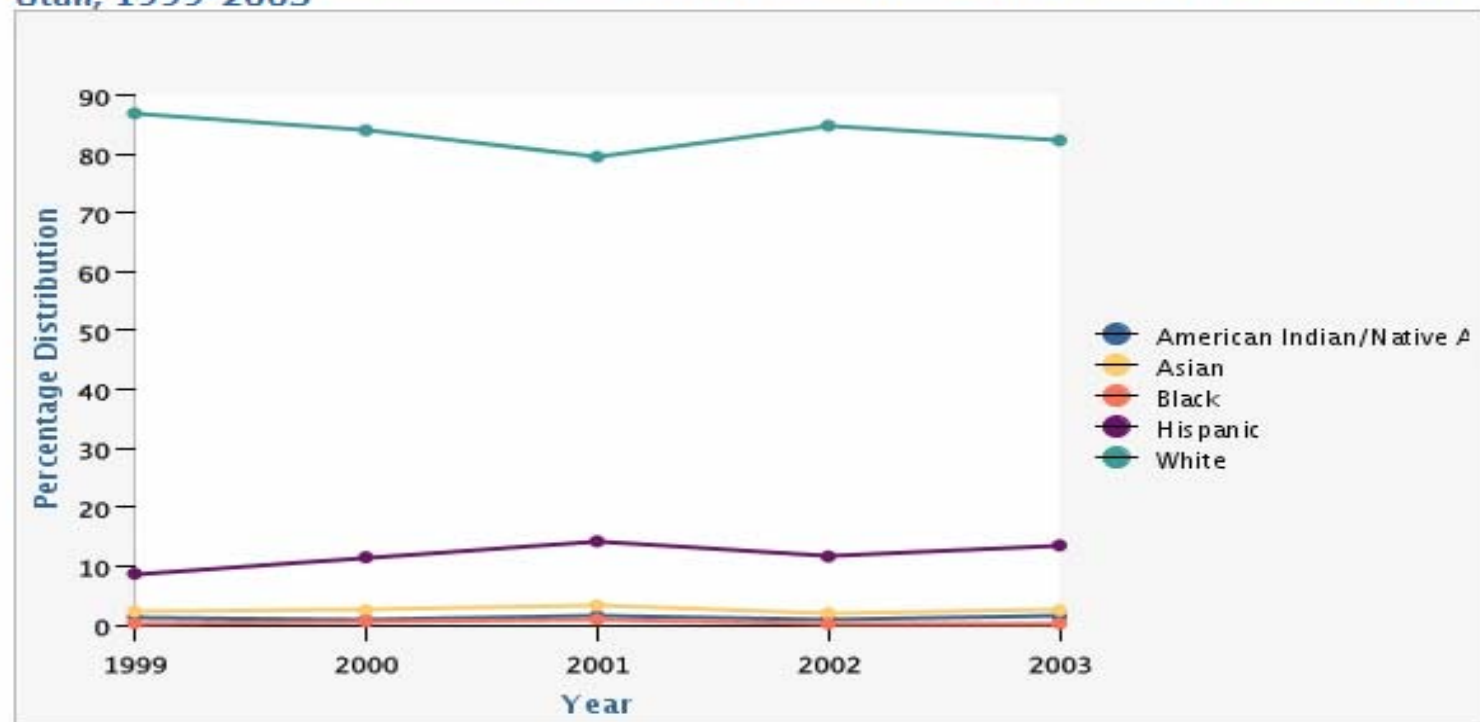


- Method to communicate data to public
 - IBIS (Indicator Based Information System)
 - Secure Portal (EPHTN)

[Important Facts](#)[Graphical Views](#)[Related Indicators](#)[Available Services](#)[Other Resources & Links](#)[Complete Profile](#)

Indicator Profile of Birth Defects: Overall

All Birth Defects Distribution of Cases Among Race/Ethnicity Groups by Year of Birth, Utah, 1999-2003

[View Graph Values](#)

Data Sources

Utah Birth Defect Network;

Other Views

- [Prevalence, Overall and by Race/Ethnicity, Utah, 1999-2003](#)
- [Trend by Race/Ethnicity, Utah, 1999-2003](#)
- [Distribution by Race/Ethnicity, Utah, 1999-2003](#)
- [Distribution by Etiology, Utah, 1999-2003](#)

Definition

Number of cases of major birth defects per 1,000 births. Major birth defects are those that require medical, surgical, or rehabilitative services, and have an impact on the person's health and development.

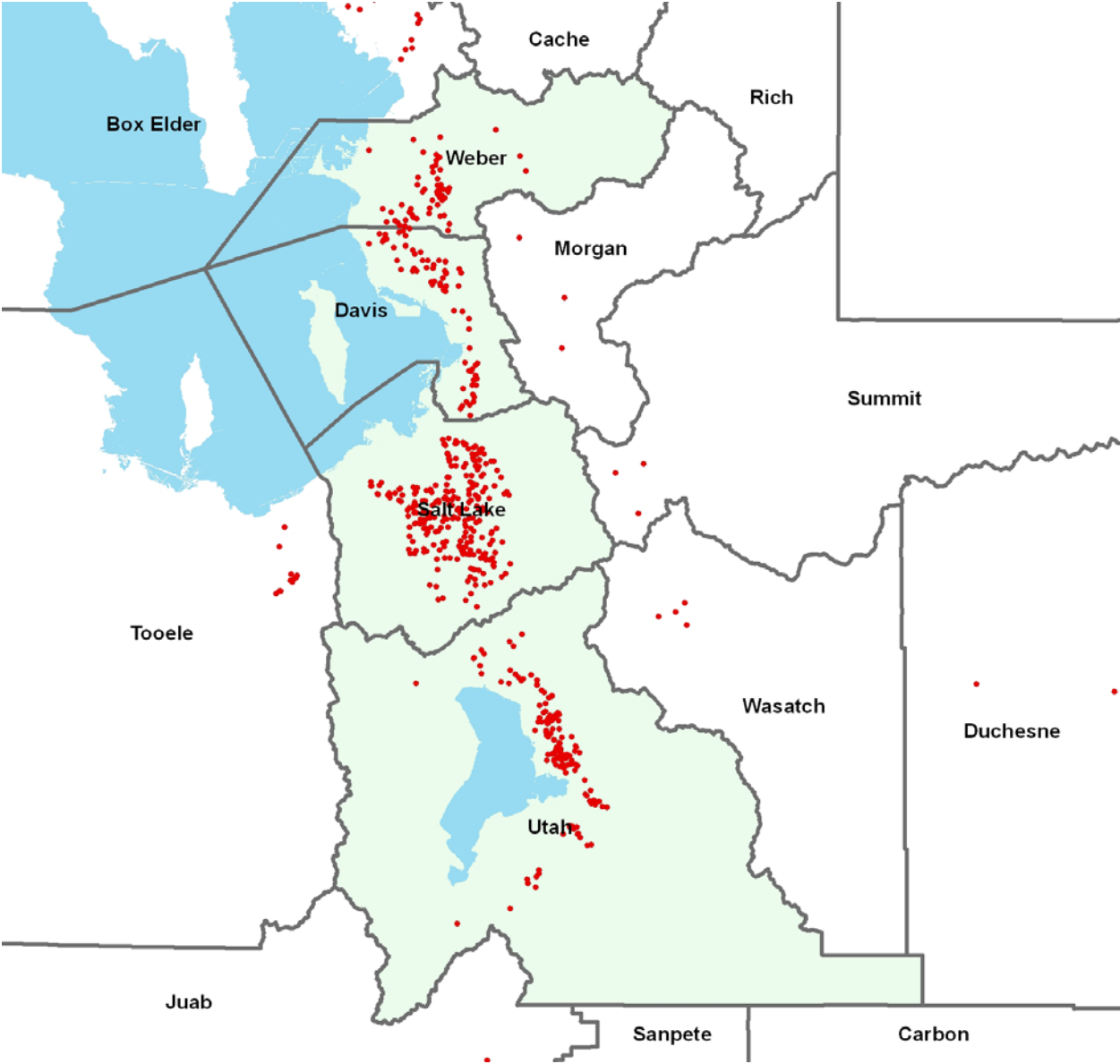
Common major birth defects include anomalies of the heart (septal defects, conotruncal defects), face and skull (e.g., cleft lip and palate), limbs (e.g., missing digits), brain or spine (e.g., anencephaly and spina bifida), kidneys and genitourinary system (e.g., absent kidney, hydronephrosis, hypospadias), liver and gastrointestinal system (e.g., biliary atresia, esophageal atresia). We include among major birth defects also chromosomal anomalies such as Down

Accomplishments

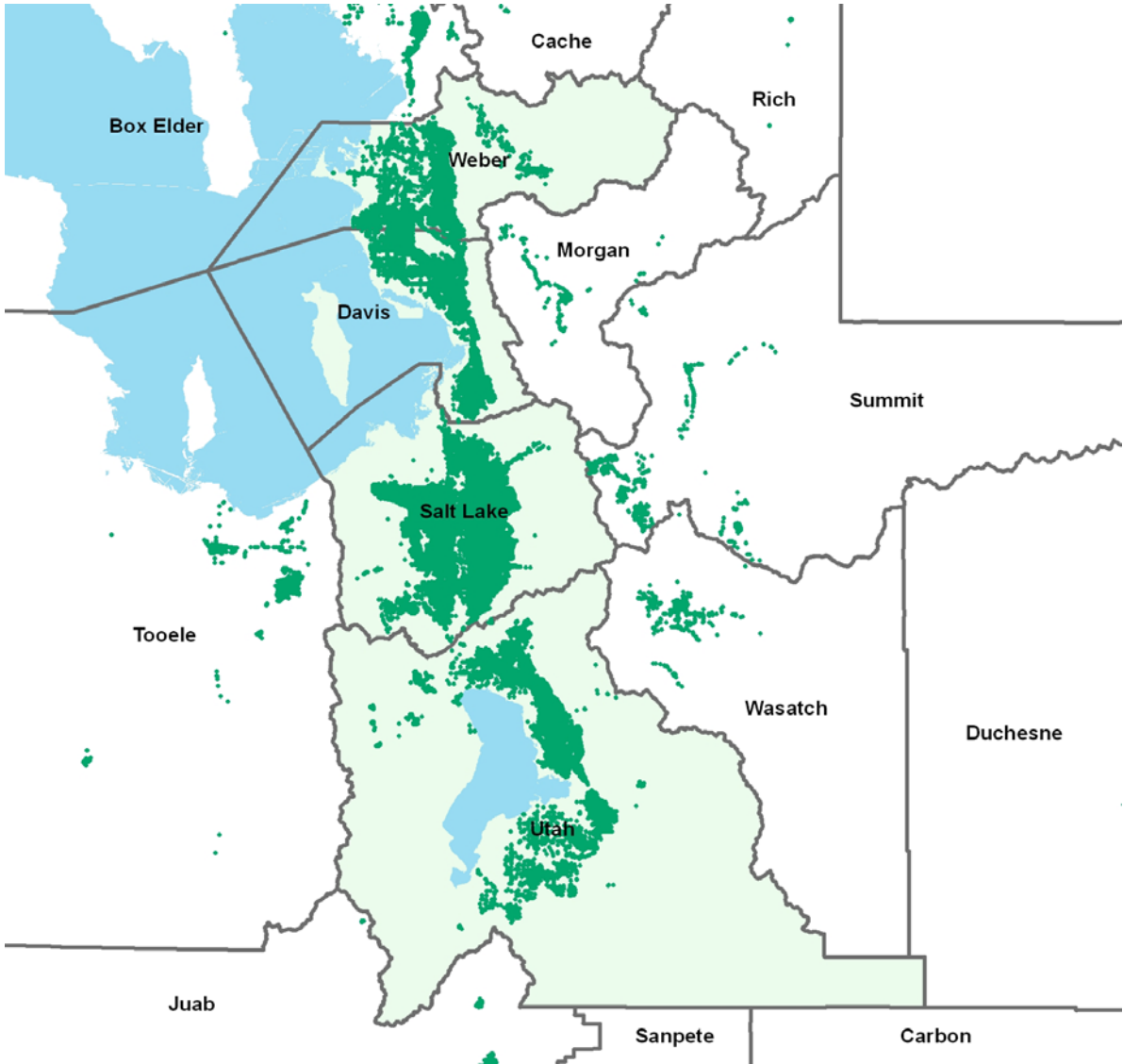


- Pilot Projects
 - All birth defects
 - Orofacial clefts

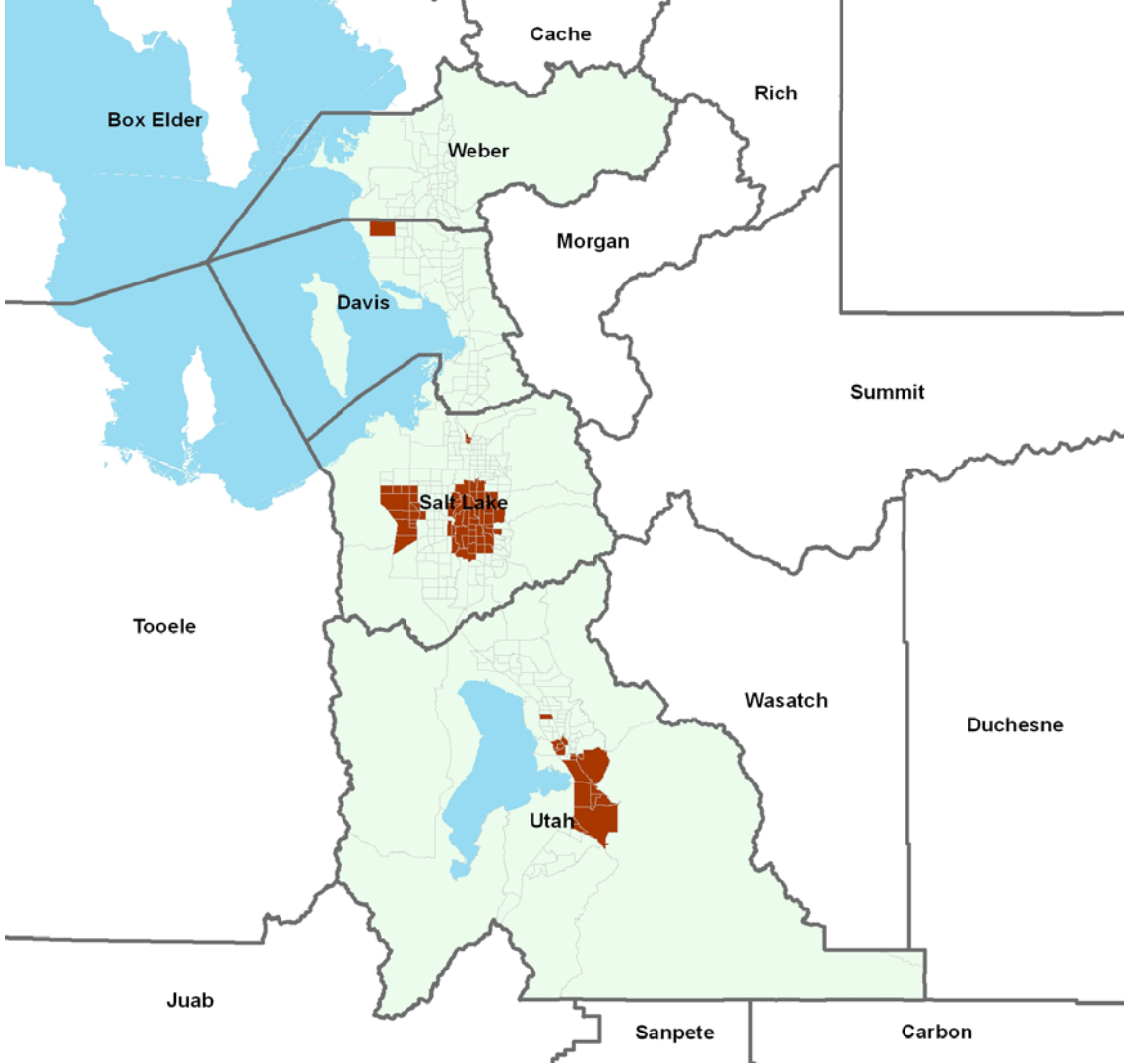
Cases in 4 urban counties



Births in 4 urban counties



Clusters detected by SaTScan



Significantly Elevated Rates by Census Block



Challenges



- Funding
 - Funding cycles
 - Stability of funds
- Data comparability
 - National Standards (EPHTN-NBDPN)

Future Goals



- Improve publicly available data
- Conduct defect specific spatial analysis
 - Cluster detection

Questions?

