

Overview of the National Environmental Public Health Tracking Program

Nicholas F. Jones, MBChB, MPH

Judy Qualters, PhD

Environmental Health Tracking Branch

National Center for Environmental Health

Centers for Disease Control and Prevention (CDC)



Presentation Overview

- How did the tracking program come about?
- What has been done so far?
- Implementing birth defects environmental health tracking

The Future of Public Health (IOM, 1988)



“The removal of environmental health authority from public health agencies has led to fragmented responsibility, lack of coordination, and inadequate attention to the health dimensions of environmental problems.”

Typical Environmental Exposures: TODAY



Infectious Agents

Fire Byproducts
Particulates, PAHs, CO

Heavy Metals

Lead, Mercury,
Palladium, Cadmium

Industrial Chemicals

PCBs, Dioxin, Toxaphene,
VOCs, Phthalates,
Adipates, PBDEs
and many others

Chlorination Byproducts

Chloroform, Bromoform, etc.

Vehicular Emissions

CO, Ozone,
Particulates, Benzene, etc.

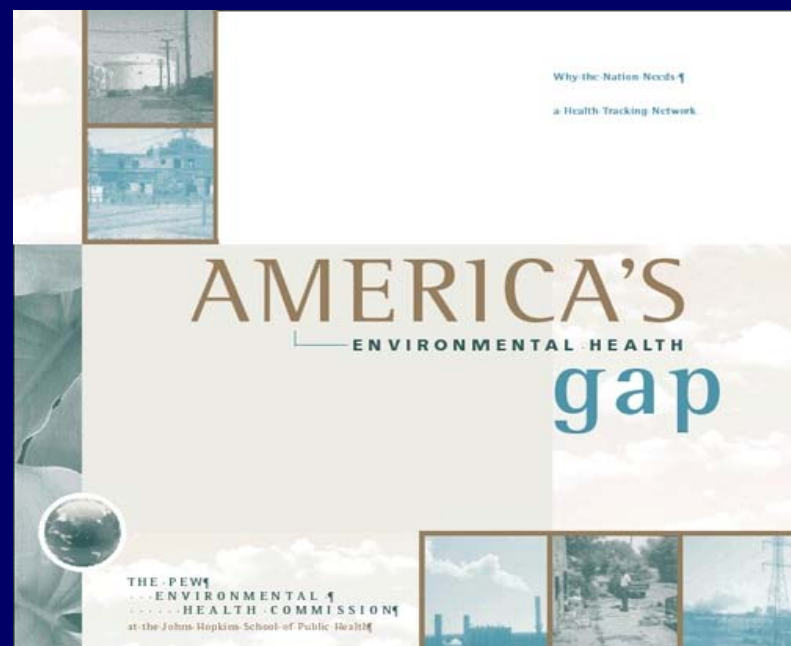
Pesticides

DDT, Mirex, 2,4-D,
Atrazine, Malathion, etc.



America's Environmental Health Gap

- Pew Commission Study
 - Survey of local and state health departments
 - Review of existing data sources
 - Review of federal tracking systems



Report Findings (2000)

- No national strategy
- National leadership void
- No linkages between hazard, exposure and outcome tracking
- Limited co-ordination of efforts across country eg no data standards
- Less than 50% pop covered by BD registries
- Public expectation – balance knowledge vs privacy

Recommendations

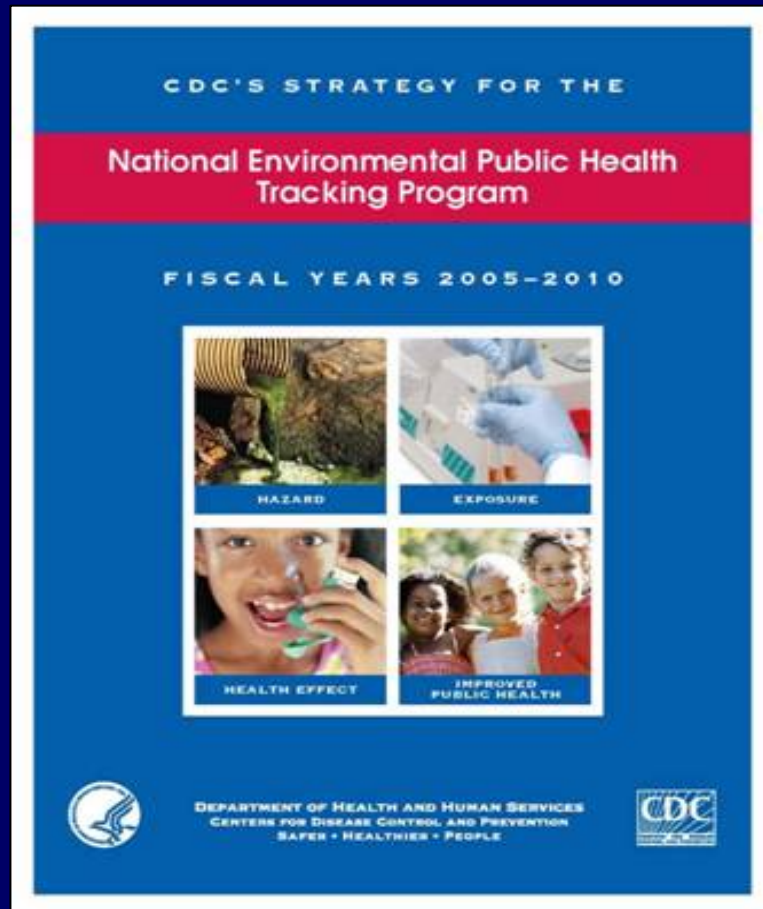
1. Establish baseline network for diseases and exposures (incl. birth defects, asthma, cancer)
2. Early warning system – EH emergencies
3. State pilot tracking programs
4. Federal investigative response capability
5. Linkage to community and academia

Congress Responds

- CDC's National Environmental Public Health Tracking Program initiated in 2002
 - Congressional funding for *"development and implementation of a nationwide environmental health tracking network and capacity development in environmental health at State and local health Departments"*



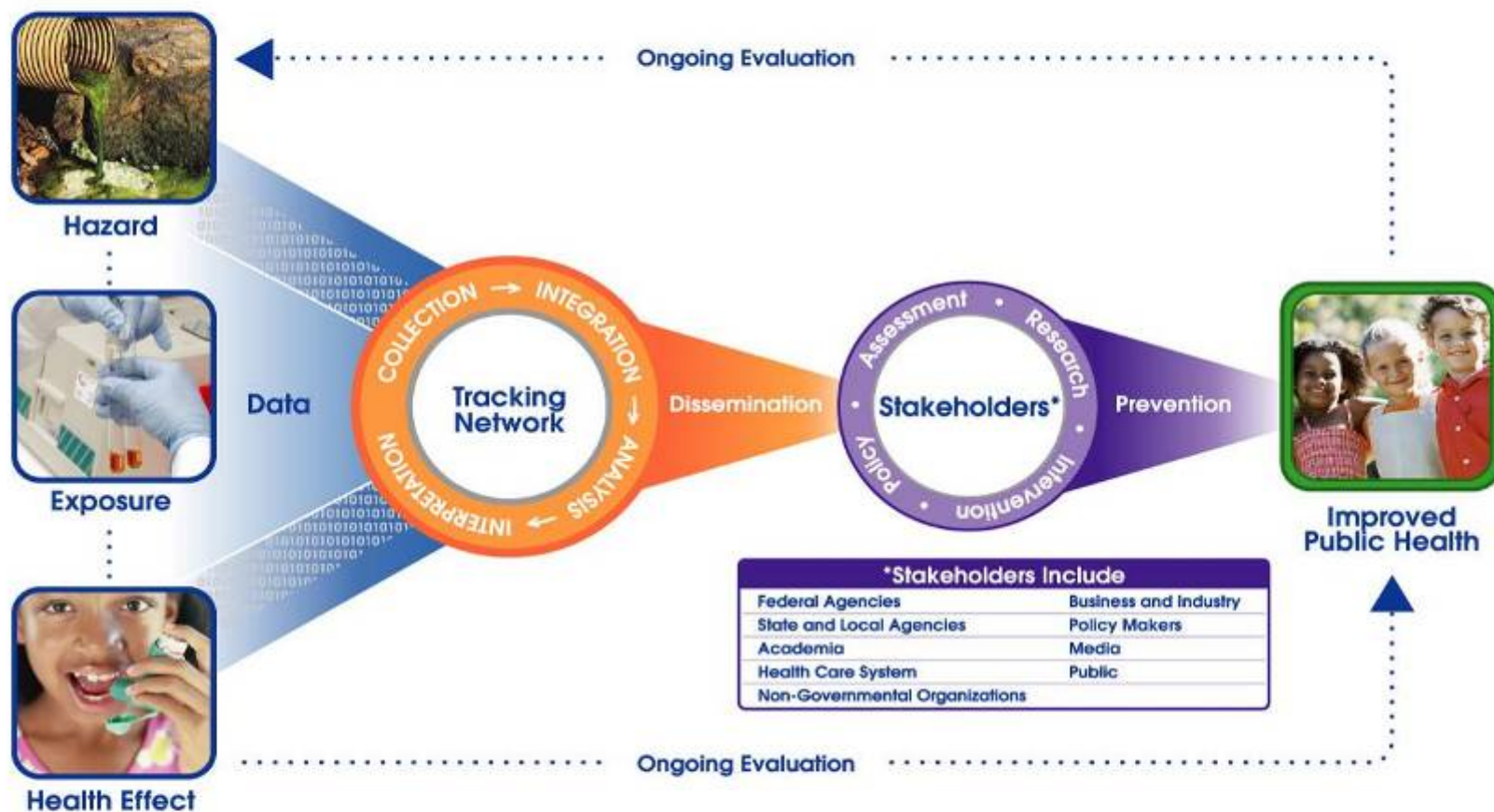
National Environmental Public Health Tracking Program



MISSION:

To provide information from a nationwide network of integrated health and environmental data that drives actions to improve the health of communities

ENVIRONMENTAL PUBLIC HEALTH TRACKING



***Stakeholders Include**

Federal Agencies	Business and Industry
State and Local Agencies	Policy Makers
Academia	Media
Health Care System	Public
Non-Governmental Organizations	



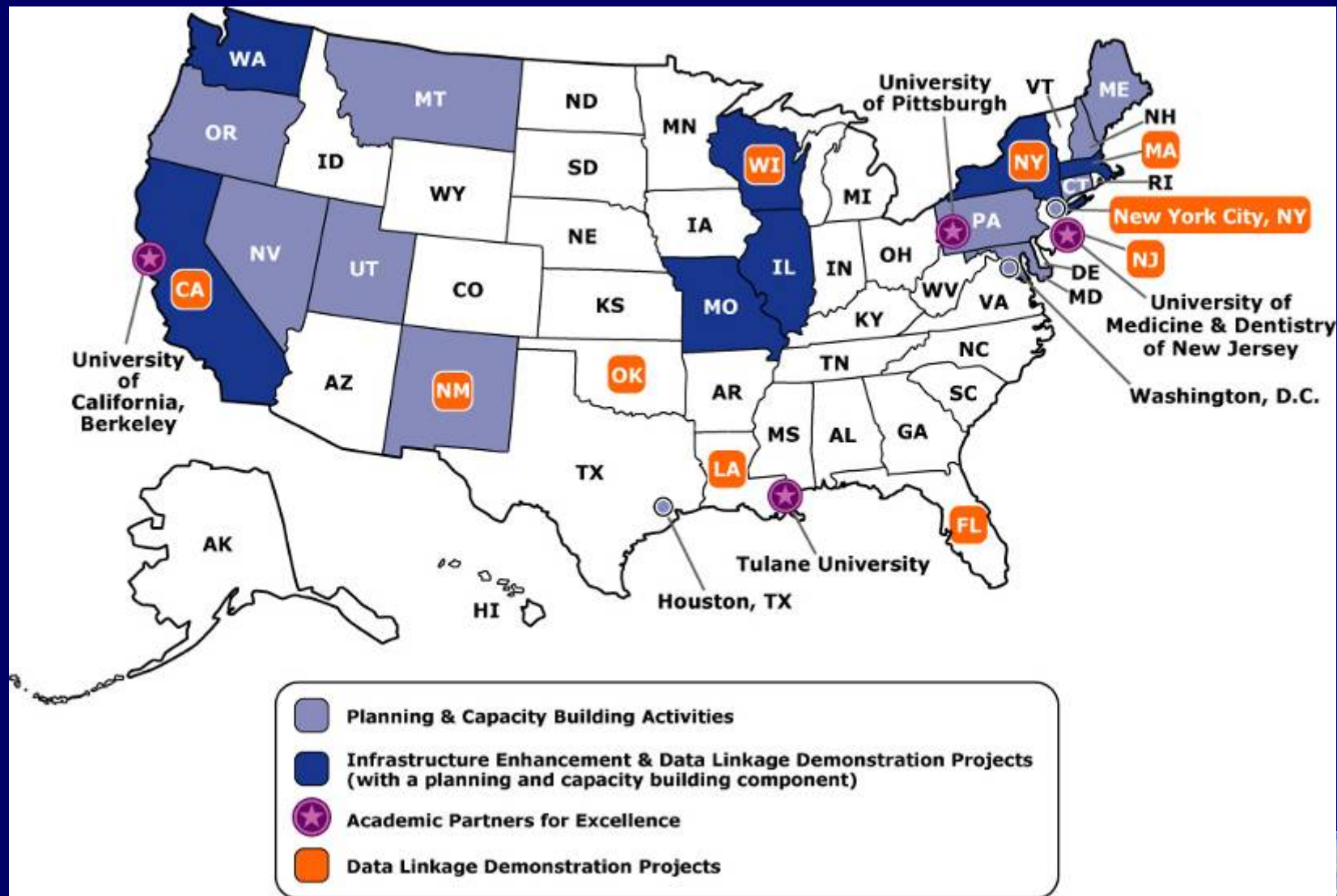
DEPARTMENT OF HEALTH AND HUMAN SERVICES
CENTERS FOR DISEASE CONTROL AND PREVENTION
SAFER • HEALTHIER • PEOPLE



2002 - 2006 Building Capacity and Pilot Testing



Developing the Tracking Program: Grantees – 2002 to 2006



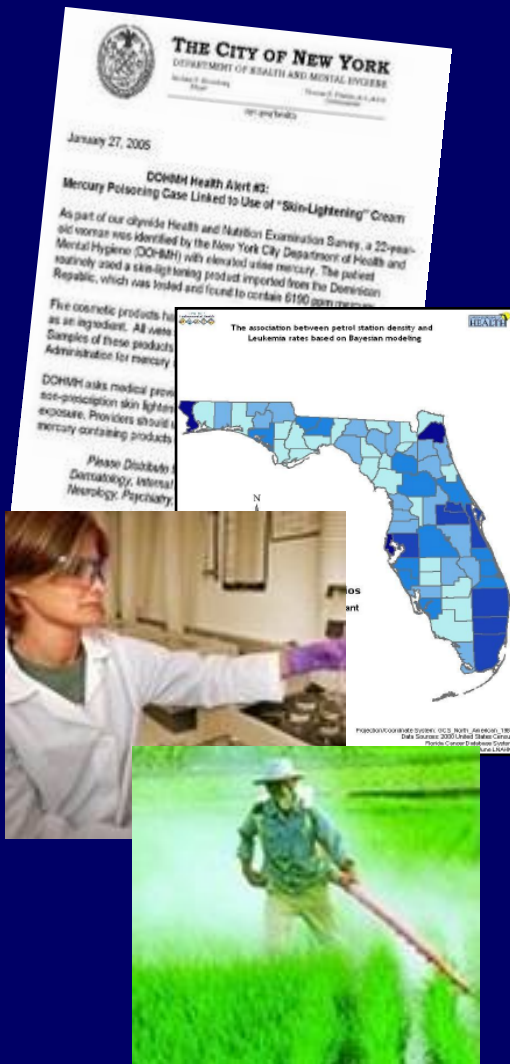
Pilot Projects

Measured	# Grantees	# Projects
Air	13	19
Asthma	11	14
Water	11	23
Cancer	8	9
Lead	6	7
Birth defects	5	7
Pesticides	4	4
Reproductive health	4	4
CO	3	3
Fish/shellfish	2	2

Birth Defects Pilot Projects

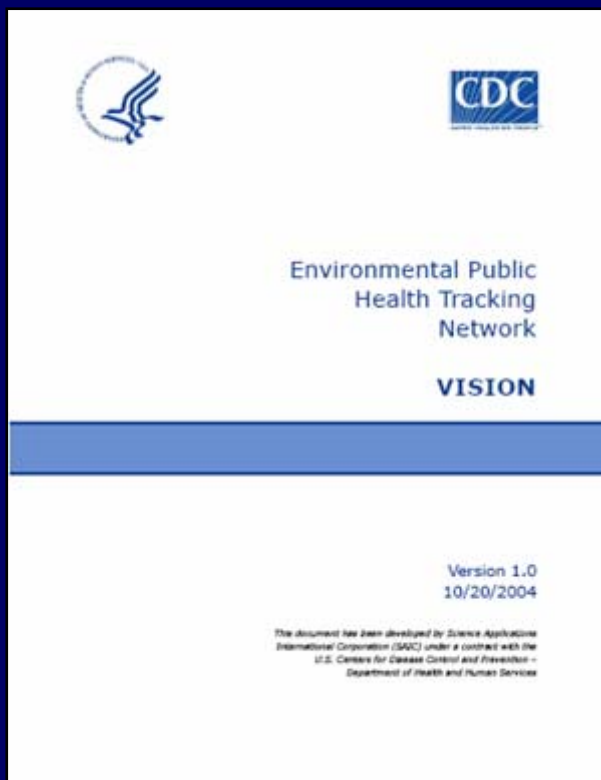
- Strengthen existing registries (eg geocoding)
- Test environmental linkage
 - FL – spatial analysis methods (RIF, WinBUGS, Satscan)
 - MA – drinking water – distribution system boundaries
 - NJ – Clefts, Cardiac, Downs, Hypospadias, Craniosynostosis, Gastroschisis – drinking water
 - OK – linkage methods
 - UT – tract level analysis – proximity to TRI sites
 - Development disability – PCB (NYS) pesticides (CA)

Overall Results from Funded Projects



- Increased capacity
- Increased availability and enhancement of existing data
- Built new data systems
- Created analytic tools
- Linked data
- Took action

Piloting to Implementation

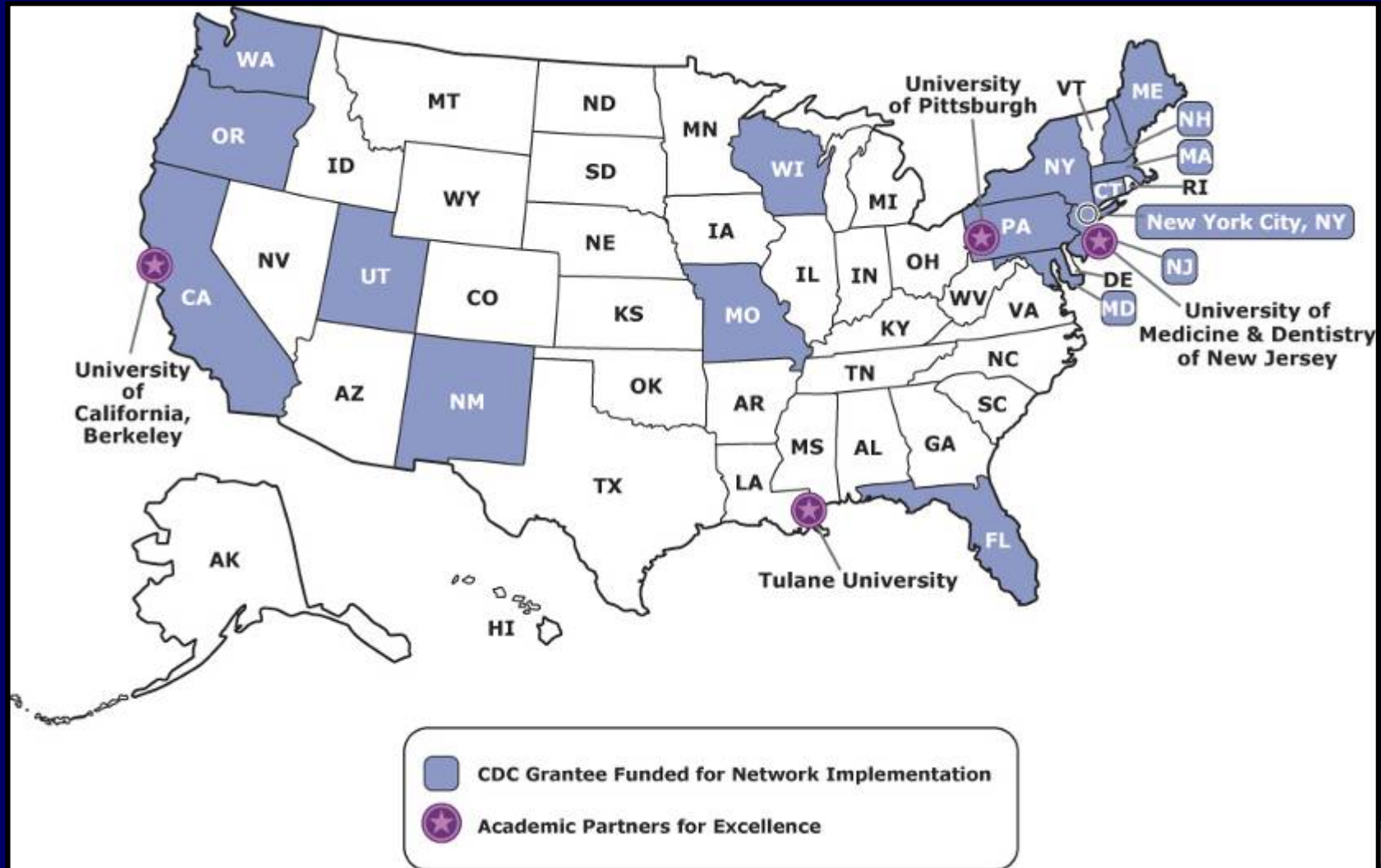


New Tracking Funds in 2006

(CDC RFA-EH06-601)

- To provide state health departments the resources to implement statewide EPHT networks that will be part of the National EPHT Network
- 17 awards
- Project Period: 5 Years

CDC's Tracking Program Grantees



National Tracking Network

Key Functions:

- Provide Nationally Consistent Data and Measures
- Describe and Discover Data
- Exchange Data
- Provide Data Management and Analysis Tools
- Inform and Interact with the Public

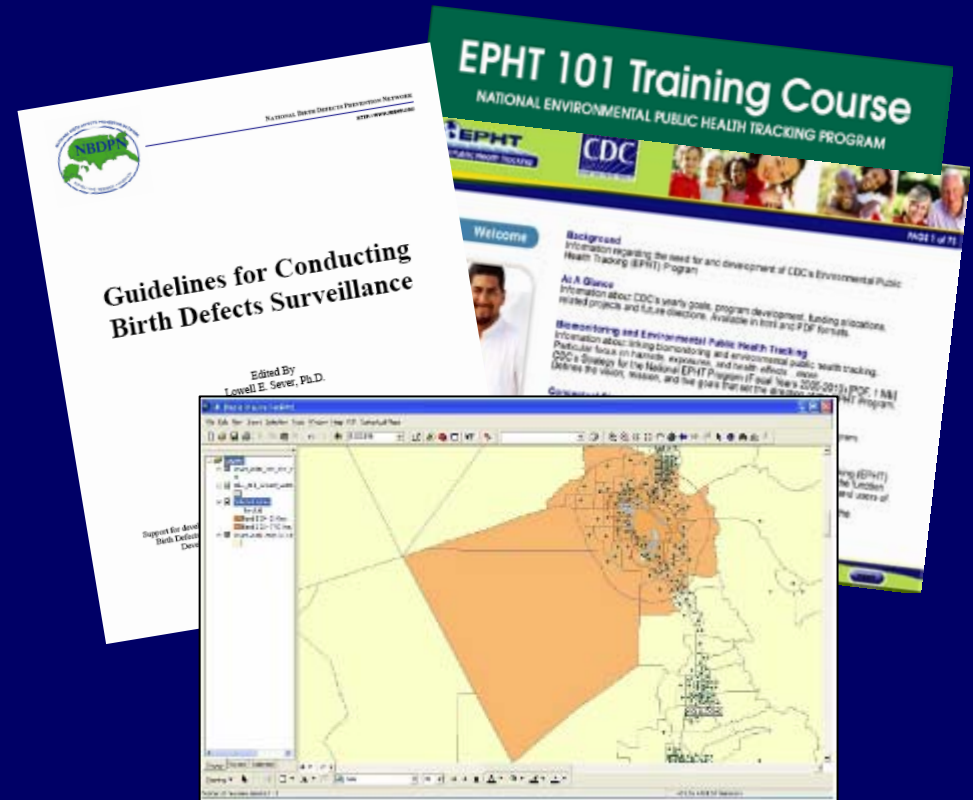


Tracking Objectives

- Ecologic linkage and population level tracking
 - Unknown effects
 - Generate hypotheses
 - Known associations
 - Identify and quantify at risk populations
 - Monitor intervention impacts
- Facilitate individual level and multilevel studies
 - Facilitate data exchange and development of tools
 - Measure associations

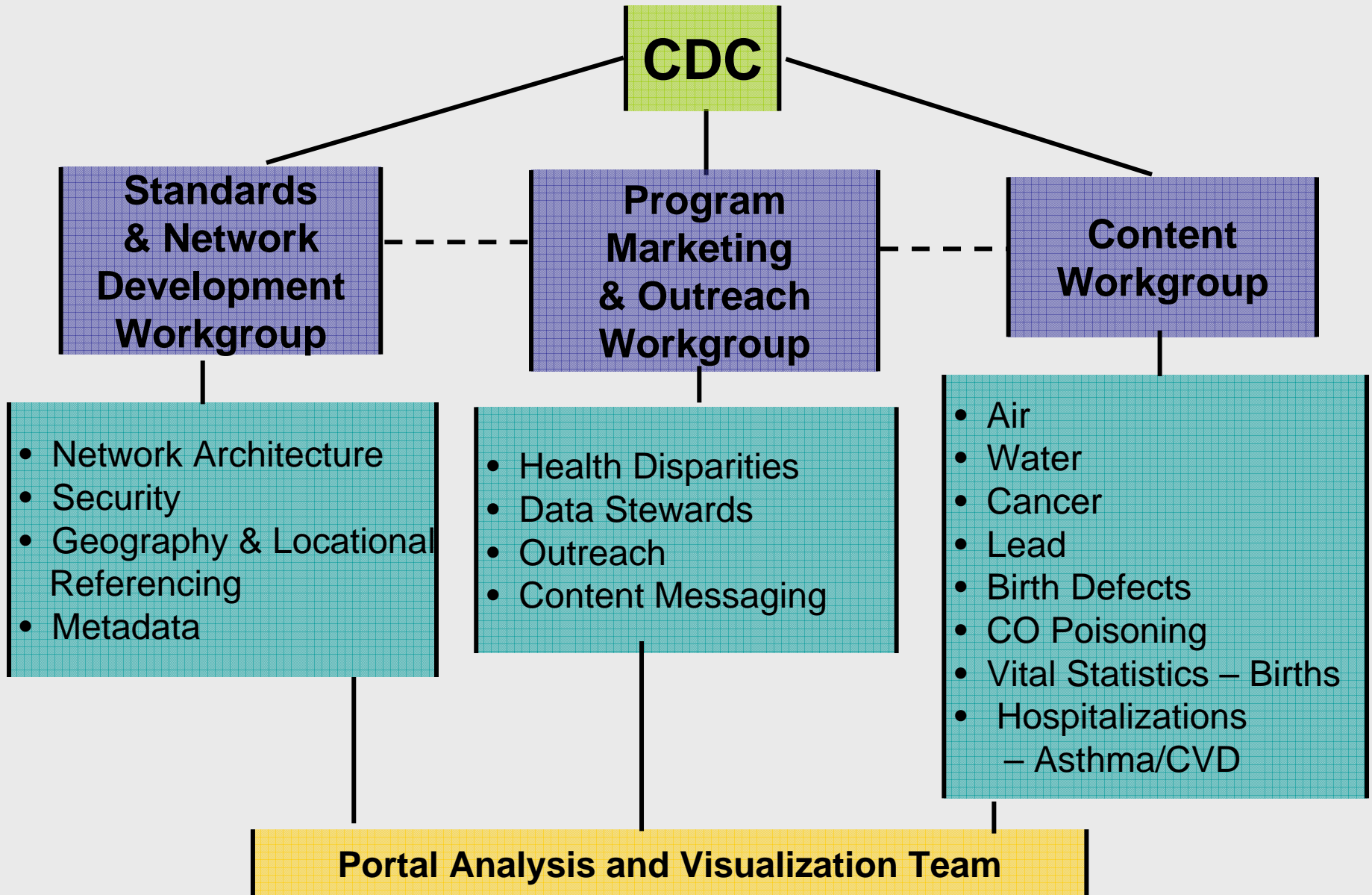
National Approach

- Identification and adoption of standards (NCDMs)
- Tools development (PAVR)
- Training
- Partnership and Collaboration



Metadata Information				
Identification	Entity and Attributes	Metadata Reference	Time Period Information	Contact Information
Element	Selected Data Source			

Ensuring Stakeholder Input



Birth Defects Implementation

- Content Work Group
- 10 of 17 grantees commence 2008
- Collaboration between registries and EPHTN programs

State	CDC codes	Age	Type	Outcomes
CA	Yes	Up to age 1	P	FD, T†
CT	No	Up to age 1	P	
FL	Yes	Up to age 1	A & P	FD
ME	No	Up to age 1	A & P	FD, T
MD	No	Newborn	P	FD, T
MA	Yes	Up to age 1	A	FD
MO	No	Up to age 1	P	FD
NH	Yes	Up to age 1	A	FD, T
NJ	No	Up to age 2*	P	
NM	No	Up to age 4	A & P	FD, T
NY	Yes	Up to age 2	A & P	
NYC	Yes	Up to age 2	P	
OR	NA	NA	NA	NA
PA	No	Up to age 2	P	FD
UT	Yes	Up to age 2	A	FD, T
WA	No	Up to age 1**	P	FD
WI	No	Up to age 2	P	FD

† all systems capture live births; FD = fetal deaths; T=terminations * voluntary to 22 ** to 10 FAS



Implementation Issues

- Privacy and small numbers
- Legislative mandates
- Data quality
- Geocoding
- Non live birth cases
- Registry establishment and support
- Organizational

Positive Impact of Tracking

- Geocoding
- Support for code change eg fetal diagnosis
- Record linkage with hospital discharge
- Support for web based reporting
- Registry provision of EPHTN data
- Secure access to data
- Enhanced data collection for tracking defects
- Supplement reporting with birth certificates
- Data linkage projects eg pesticides and hypospadias

Data to Action

Key Issues for Tracking

- Reaching local levels
- Measuring exposure
- Linking health, exposure, & hazard data
 - Measuring impact
- Utility to stakeholders



Linking data by place

Social
demographic
eg census, BRFSS

Health events
eg hospitalisations
births

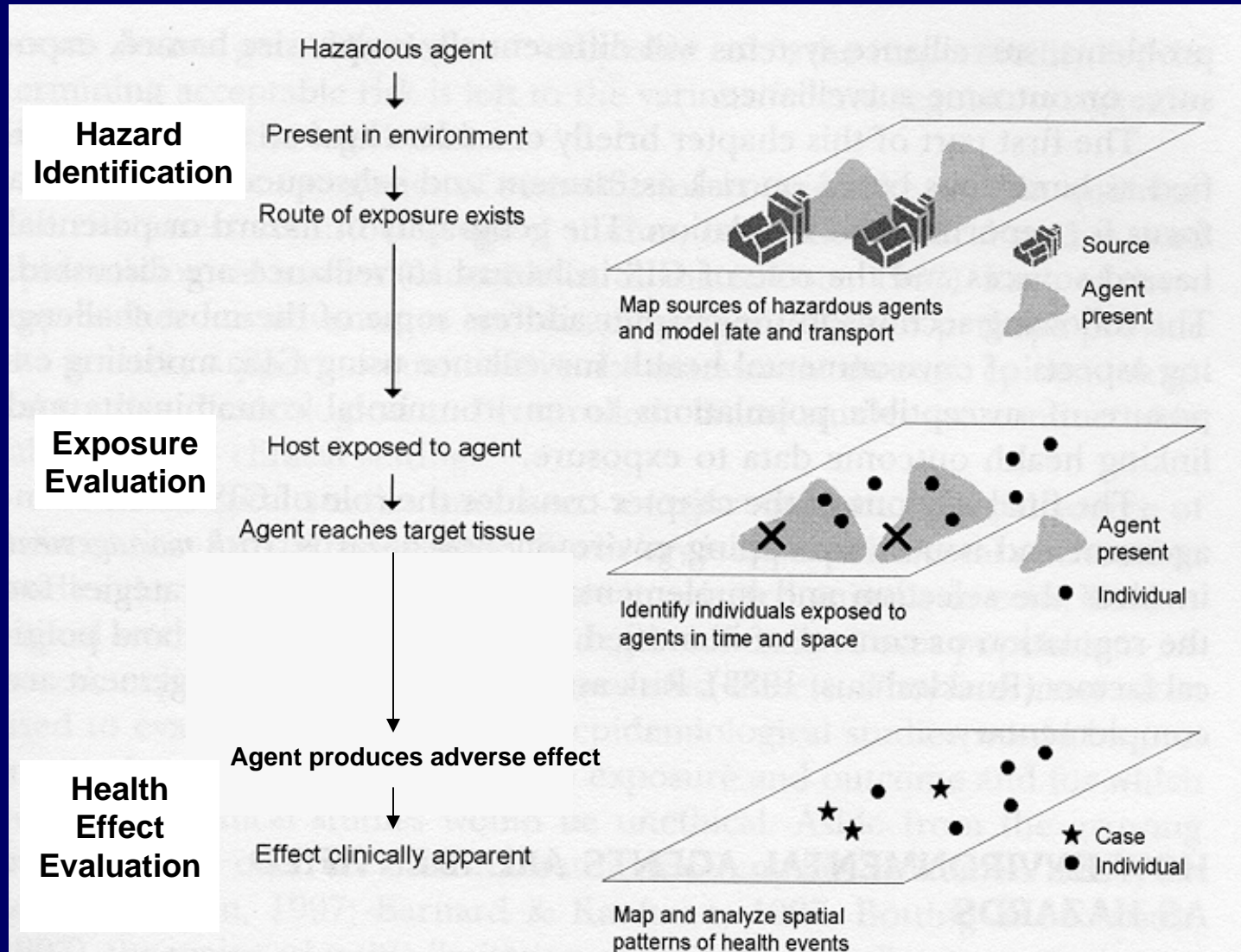
Physical environment
eg water supply, air
toxic substances

home
work
school

areas (eg county, tract, zip)
points (eg street address)
lines (eg roads, rivers)

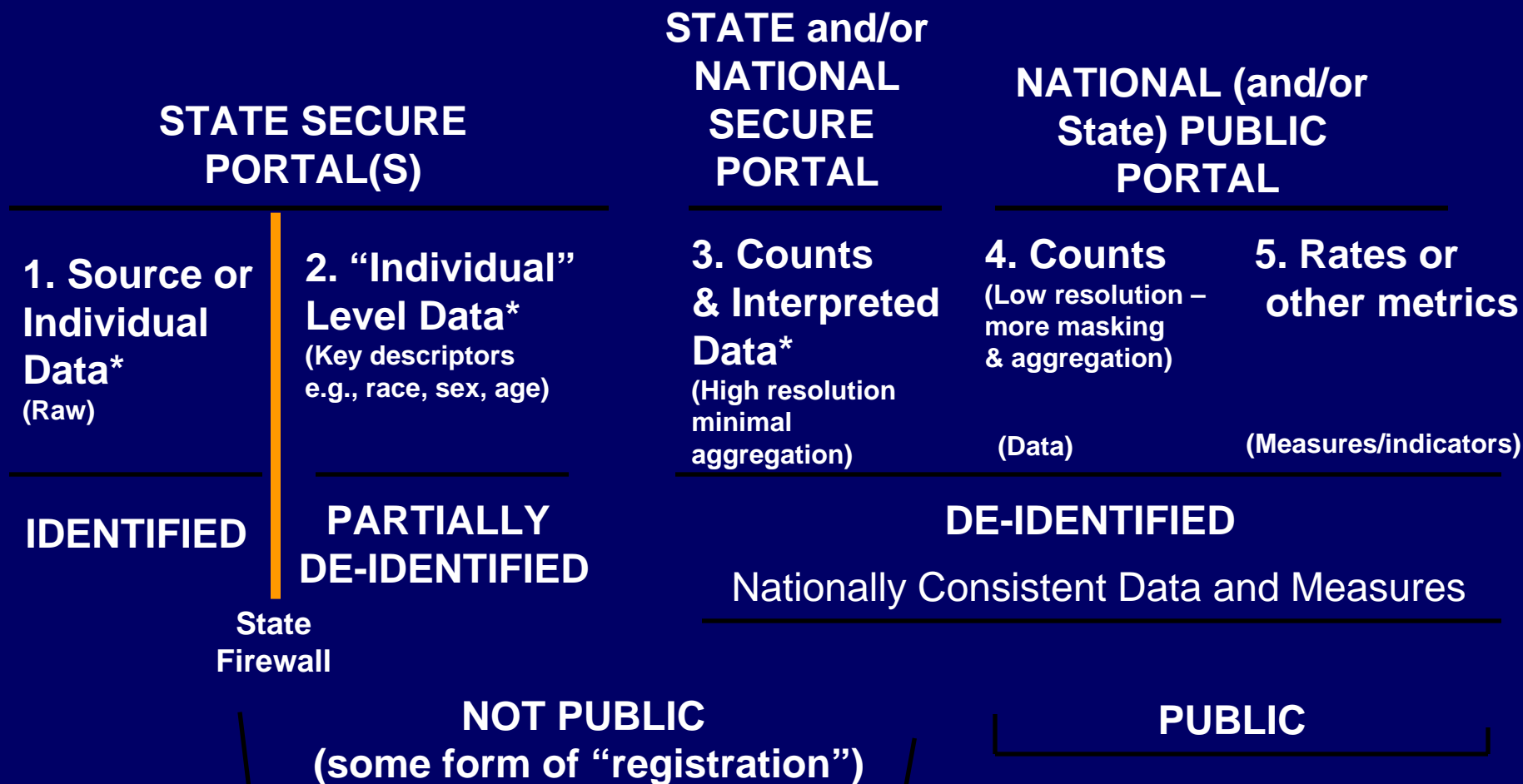
Environmental-Spatial Model

Environmental Public Health Tracking



Adapted from "GIS and Public Health," Cromley and McLafferty 2002

DRAFT EPHTN HEALTH DATA MODEL



*Conceivably linkable data

Summary

- Tracking data are essential to successful public health
- Success depends on cooperation among many organizations
- Excellent progress to date
- Next step - staged implementation at local, state and national level
- Vision: Healthy Informed Communities





Environmental Health

Environmental Hazards & Health Effects Program

Tracking Program

- > [Tracking Home](#)
- > [About the Program](#)
- > [Communications Library](#)
- > [Communicate with the Program](#)
- > [Conferences & Meetings](#)
- > [Data Resources](#)
- > [EPHT Network](#)
- > [Partnerships](#)
- > [Policy & Legislation](#)
- > [Program Grants & Contacts](#)
- > [Publications](#)
- > [Related Programs](#)
- > [Special Projects](#)
- > [Webinars](#)

ENVIRONMENTAL HAZARDS & HEALTH EFFECTS

National Environmental Public Health Tracking Program

- [Email this page](#)
- [Printer-friendly version](#)

IN THE SPOTLIGHT



UPDATED! Register Now: TRACKS 2006
Online registration and online abstract submission forms for the National Tracking Conference now available ...[more](#)



NEW! Winter 2006 Edition (PDF, 156 Kb)
National EPHT Program Newsletter with news, events, and updates on EPHT activities, partners, workgroups, and committees ...[more](#)



2006 Spatial Epidemiology Conference
CDC and SAHSU at Imperial College London sponsor this conference featuring geographical variations in environmental health ...[more](#)

About the Program

Background, Vision, At a Glance, Program in Brief, Conceptual Diagram ...[more](#)

Communications Library

Resources from tracking grantees and other organizations ...[more](#)

Quick Links

- > [National Center for Environmental Health \(NCEH\)](#)

Key Resources

[Mini-Monograph in Environmental Health Perspectives](#)

Programs & Campaigns

[HELIX-Atlanta](#)

[CDC-Funded Tracking Projects](#)

[National Biomonitoring Program](#)

[Environmental Public Health Indicators Project](#)

For more information: www.cdc.gov/nceh/tracking

Contact us: EPHT@cdc.gov

